

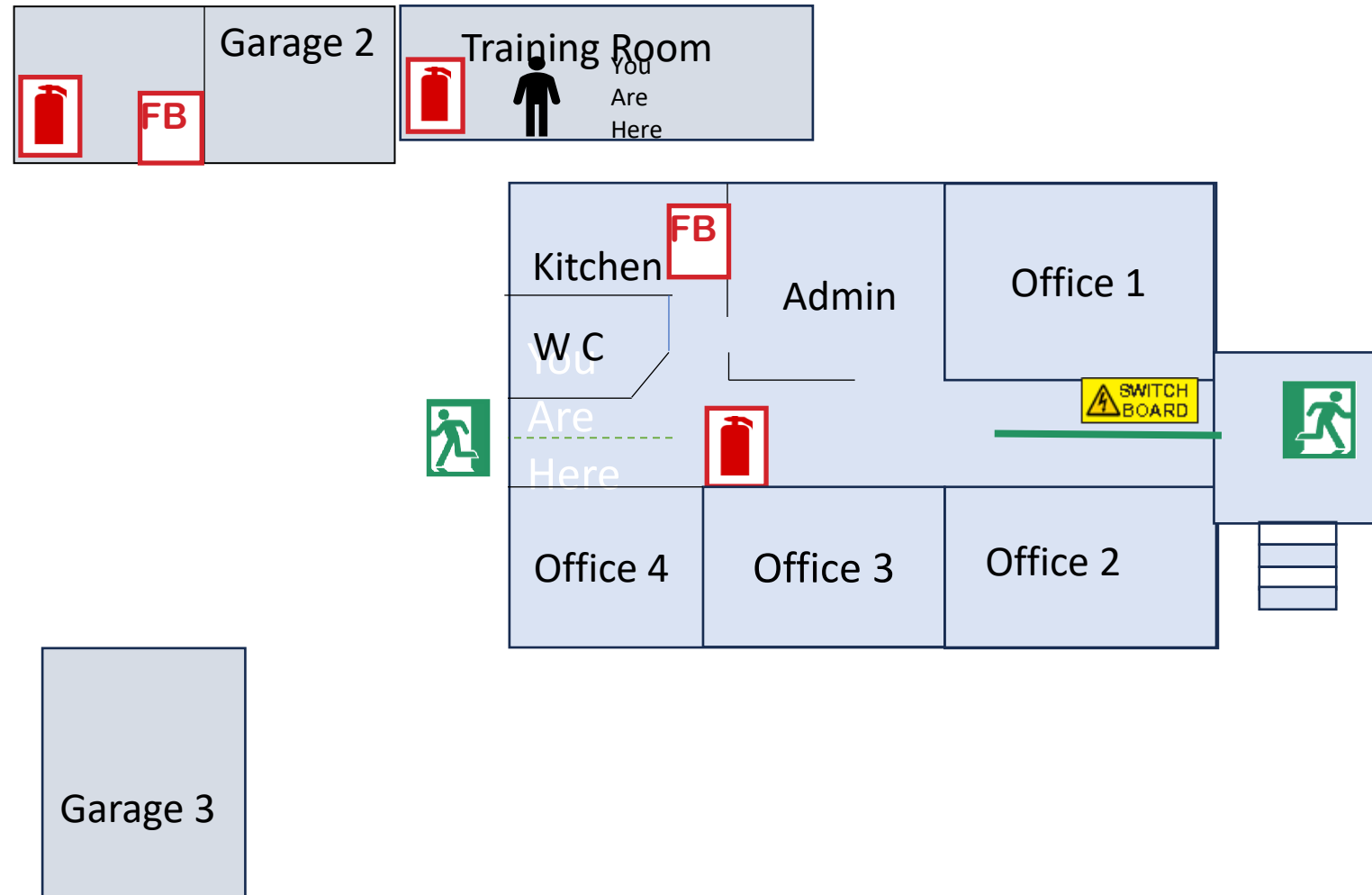
EVACUATION DIAGRAM



Headway Gippsland

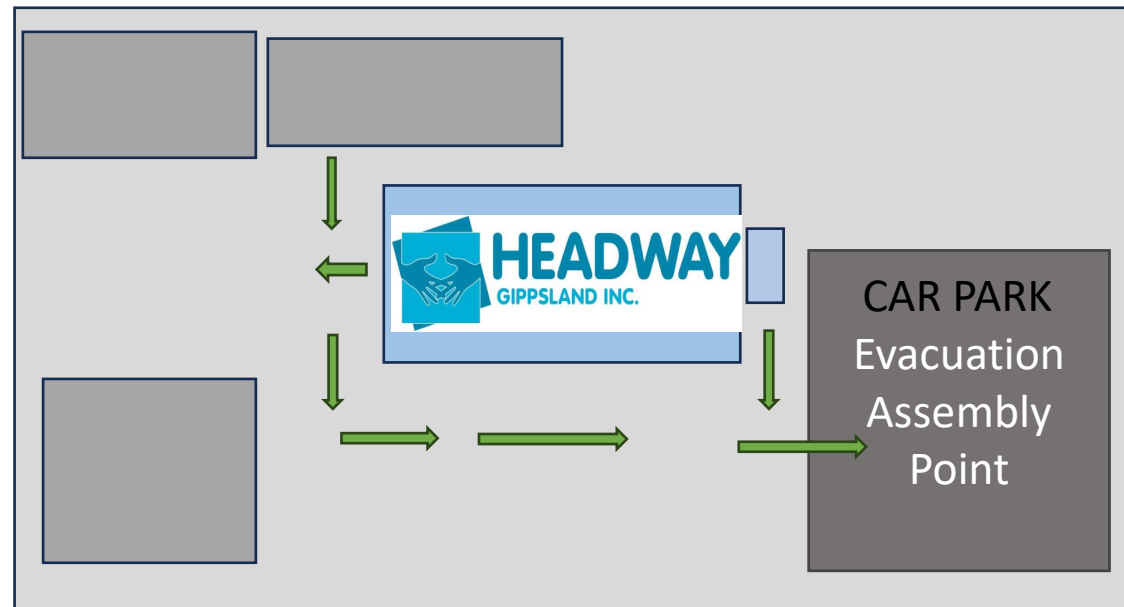
30 Monash Way

Newborough Vic 3825



EMERGENCY PROCEDURES

- 1** RAISE THE ALARM, NOTIFY NEARBY OCCUPANTS
- 2** ASSIST ANY PERSON IN DANGER
IF IT IS SAFE TO DO SO
- 3** MOVE TO THE NEAREST SAFE EVACUATION ASSFMBIY ARFA
- 4** REMAIN AT THE EVACUATION ASSEMBLY AREA
REPORT ANYONE MISSING TO THE CHIEF WARDEN OR RESPONDING EMERGENCY



LEGEND

- Exit Point
- Fire Blanket
- Fire Extinguisher
- Evacuation Route via Front Door
- Evacuation Route via Back Door
- Switch Board

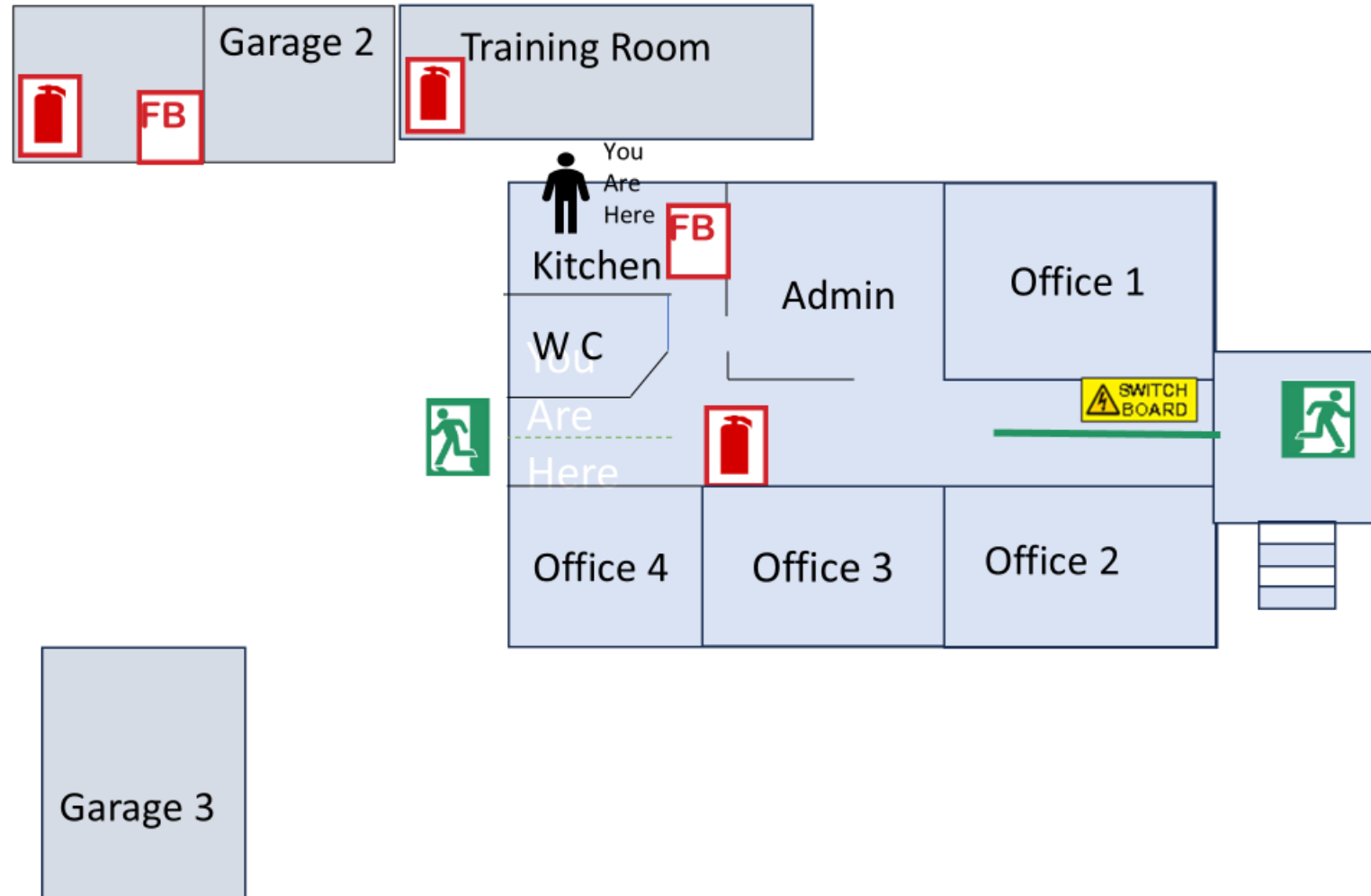
EVACUATION DIAGRAM



Headway Gippsland

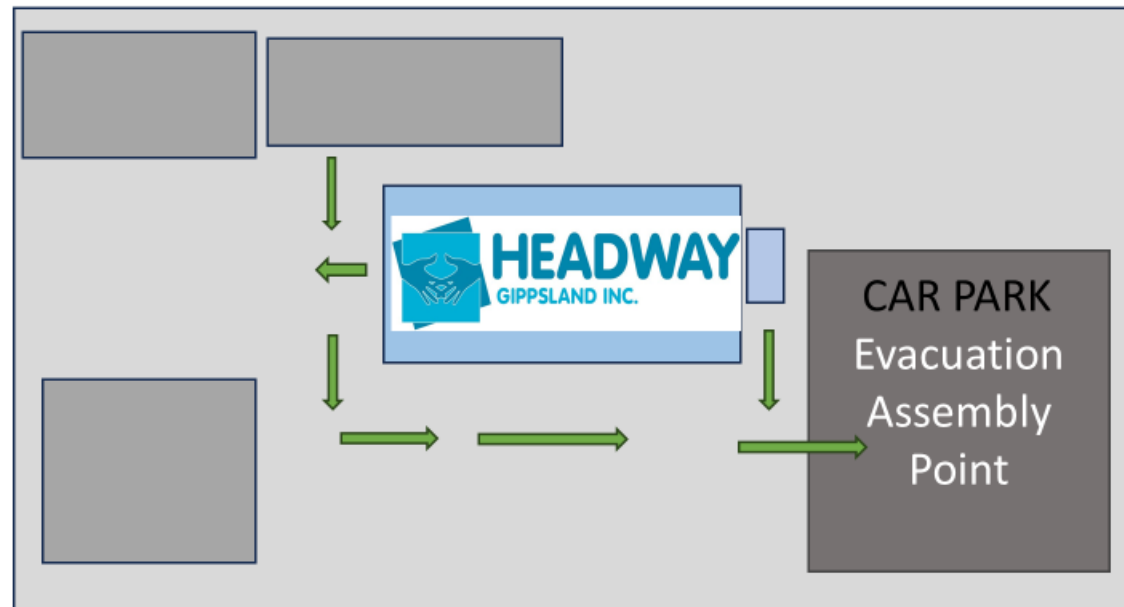
30 Monash Way

Newborough Vic 3825



EMERGENCY PROCEDURES

- 1** RAISE THE ALARM, NOTIFY NEARBY OCCUPANTS
- 2** ASSIST ANY PERSON IN DANGER
IF IT IS SAFE TO DO SO
- 3** MOVE TO THE NEAREST SAFE EVACUATION ASSEMBLY AREA
- 4** REMAIN AT THE EVACUATION ASSEMBLY AREA
REPORT ANYONE MISSING TO THE CHIEF WARDEN OR RESPONDING EMERGENCY



LEGEND

- Exit Point
- Fire Blanket
- Fire Extinguisher
- Evacuation Route via Front Door
- Evacuation Route via Back Door
- Switch Board

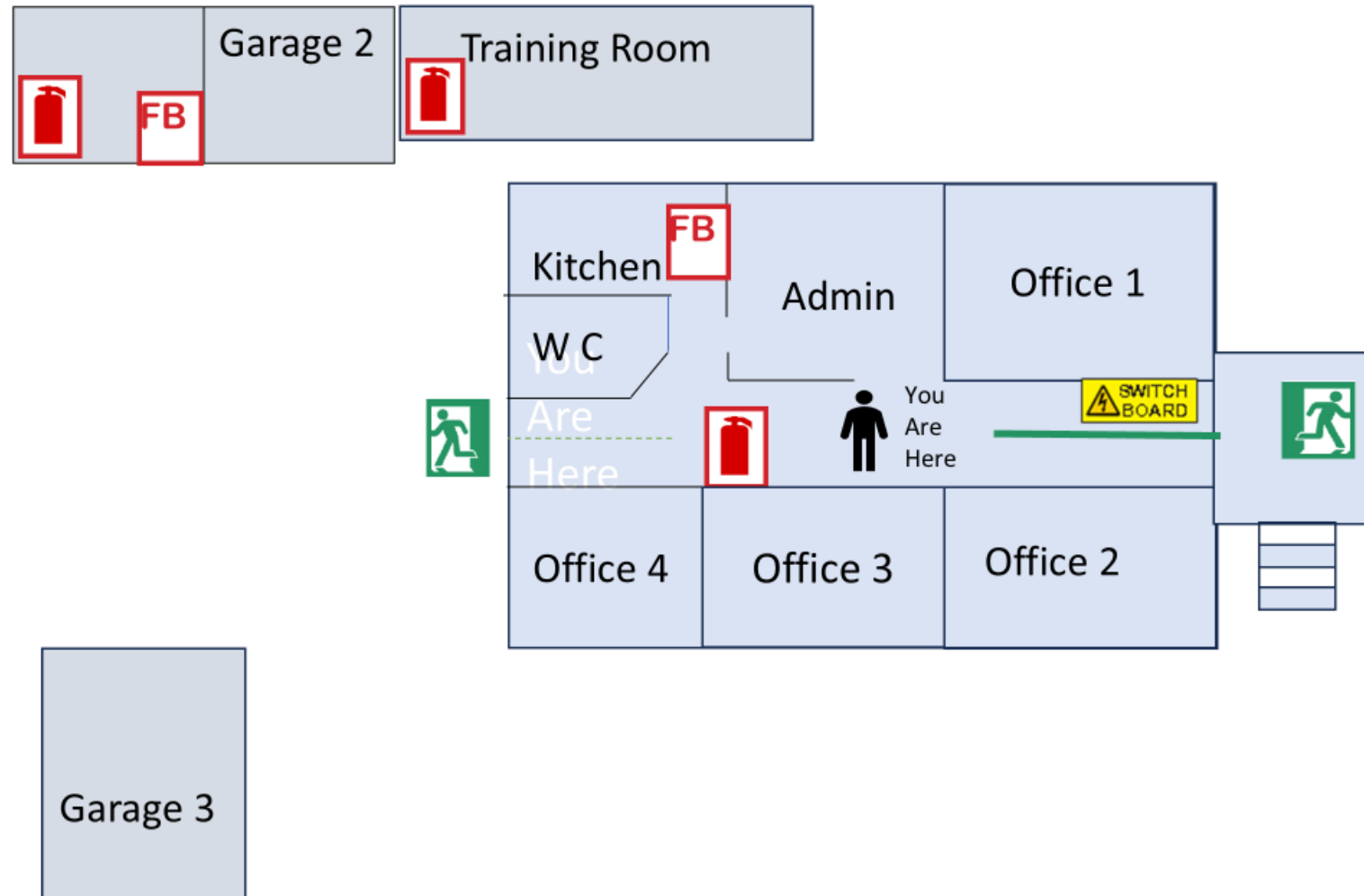
EVACUATION DIAGRAM



Headway Gippsland

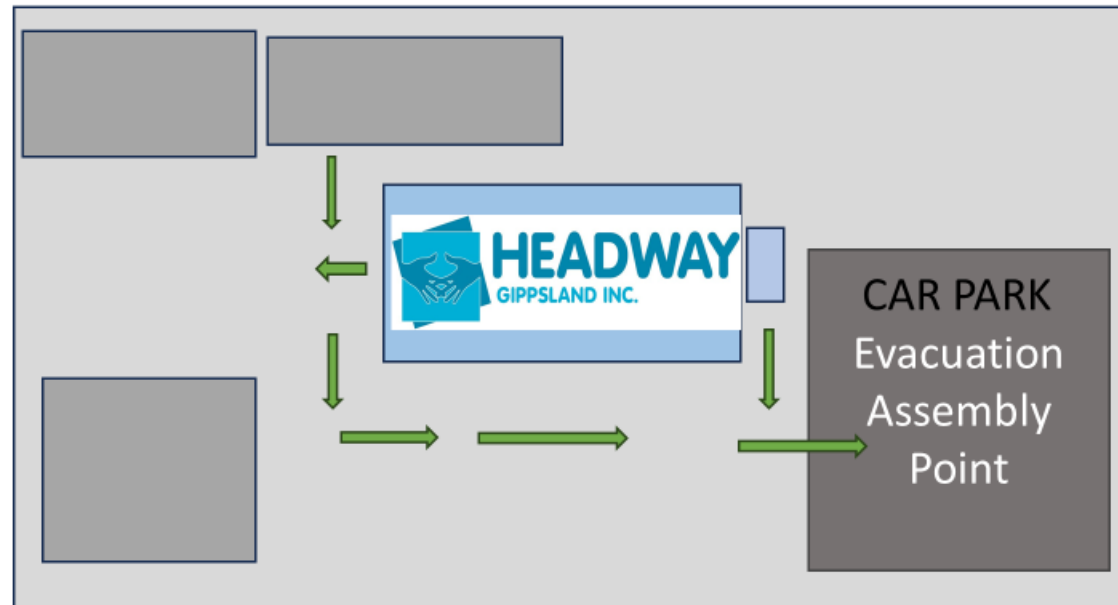
30 Monash Way

Newborough Vic 3825



EMERGENCY PROCEDURES

- 1** RAISE THE ALARM, NOTIFY NEARBY OCCUPANTS
- 2** ASSIST ANY PERSON IN DANGER
IF IT IS SAFE TO DO SO
- 3** MOVE TO THE NEAREST SAFE EVACUATION ASSEMBLY AREA
- 4** REMAIN AT THE EVACUATION ASSEMBLY AREA
REPORT ANYONE MISSING TO THE CHIEF WARDEN OR RESPONDING EMERGENCY



LEGEND

- Exit Point
- Fire Blanket
- Fire Extinguisher
- Evacuation Route via Front Door
- Evacuation Route via Back Door
- Switch Board